

ALL YOU NEED IS LOVE (The Beatles)

Intro CLAVIER

G **D/F#** **Em** **D2 transition**

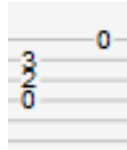
Love love love

G **D/F#** **Em** **D2 transition**

Love love love

D7/A **G** **D7/A**

Love love love



D/F# Am G D/F# PENDANT DESCENTE CLAVIER

G **D/F#** **Em transition**

There's nothing you can do that can't be done

G **D/F#** **Em transition**

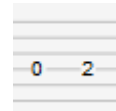
Nothing you can sing that can't be sung

D7/A **G** **D/F#** **Am**

Nothing you can say but you can learn how to play the game

D **D/C transition**

It's easy



DESCENTE CLAVIER

G **D/F#** **Em transition**

There's nothing you can make that can't be made

G **D/F#** **Em transition**

No one you can save that can't be saved

D7/A **G** **D/F#** **Am**

Nothing you can do but you can learn how to be you in time

D **D/C transition**

It's easy

G **A** **D/A** transition

All you need is love

G **A** **D/A** transition

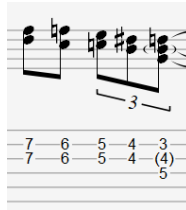
All you need is love

G **B7** **Em** **G/D**

All you need is love love

C **D5** **G**

Love is all you need



SOLO GUITARE ET CLAVIER (violon)

REFRAIN

G **D/F#** **Em** transition

There's nothing you can know that isn't known

G **D/F#** **Em** transition

Nothing you can see that isn't shown

D7/A **G** **D/F#** **Am**

Nowhere you can be that isn't where you're meant to be

D **D/C** transition

It's easy



REFRAIN

G **A** **D/A** transition

All you need is love

G **A** **D/A** transition

(All together now) All you need is love

D7 **G** **A7** **D7**

(Everybody) All you need is love

G **D** **G**

Love is all you need (x15)